



BASE4

BASE4
3858 GLADES ROAD, #31
BOCA RATON, FLORIDA 33434
1170 175 BASE4 www.base-4.com

SEAL



GARRY VERMAAS, PhD, PE
9011 EDGEWATER BEND
PARKLAND, FLORIDA, 33076



ISSUE:

Issued for Permit
08.05.2016

PROJECT: 16-018

Hampton Inn & Suites

New Stanton, PA 15672

OWNER:

Stanton Hospitality LLC

52 Blueberry Lane,
Grove City, PA 16127

No.	Issue Date	Project Status

DATE 2016.08.05

DRAWN BY JP

CHECKED BY GWV

SCALE AS NOTED

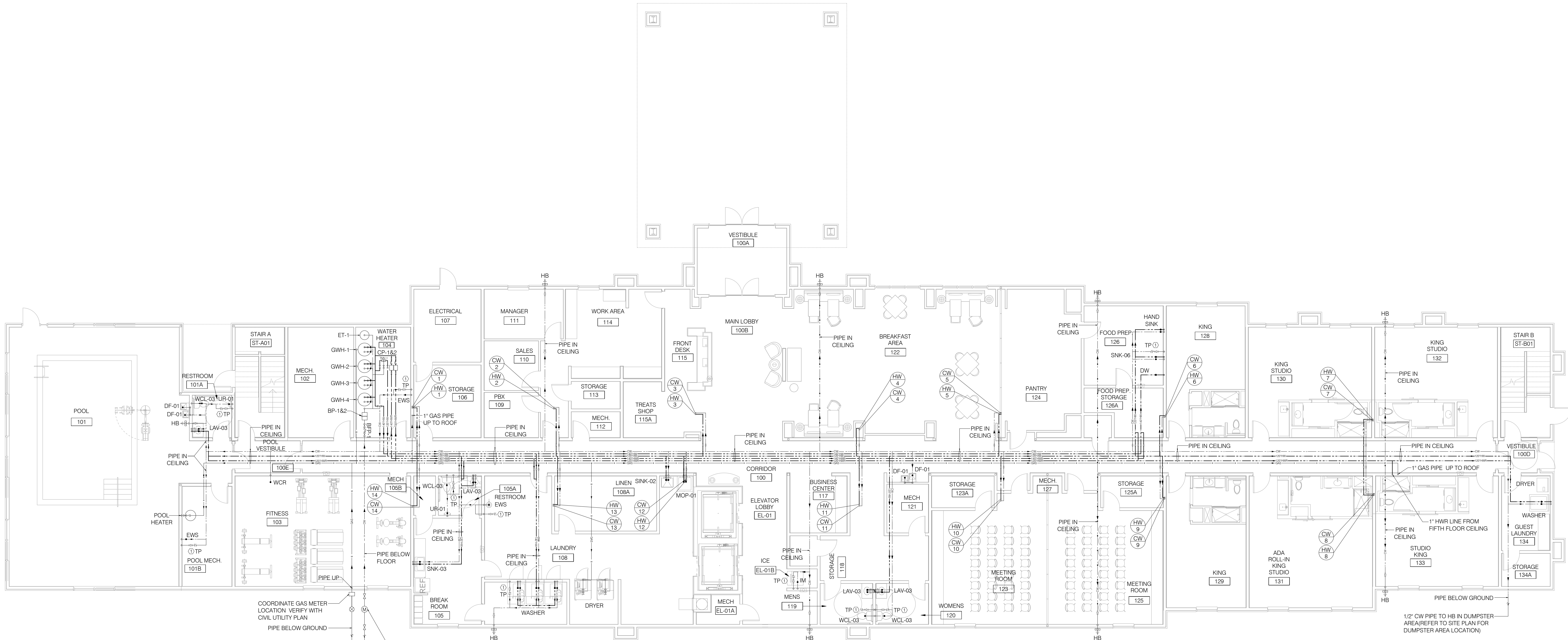
PROJECT NO. B4-67-1603

SHEET NAME

FIRST FLOOR
WATER & GAS
SUPPLY PLAN

SHEET NO.

P201



01 FIRST FLOOR WATER & GAS SUPPLY PLAN
SCALE: 1/8"=1'-0"

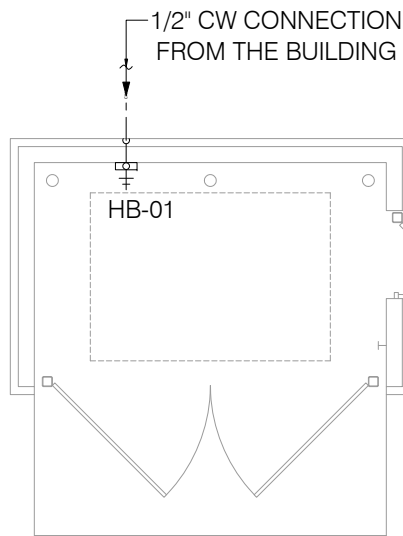
GENERAL NOTES

1. WATER HAMMER ARRESTORS SHALL BE PROVIDED AT ALL QUICK-CLOSING VALVES SUCH AS FLUSH VALVE, WASHING MACHINES, ICE MAKERS, REFRIGERATOR, DISHWASHERS, AND DRINKING FOUNTAINS ARRESTOR SHALL CONFORM TO ASSE1010.
2. REFER TO THE ENLARGED PLANS FOR THE PIPING IN EACH UNIT.
3. REFER TO THE ARCHITECTURAL DRAWING FOR PANTRY EQUIPMENT CALLOUTS. CONTRACTOR TO COORDINATE LOCATION OF PLUMBING RISER IN SHAFT WITH OTHER TRADES.
4. REFER TO PLUMBING ISOMETRIC DRAWINGS FOR PIPE SIZES NOT LABELED IN PLANS.
5. IF PER FLOW TEST, STATIC PRESSURE IS LESS THAN 78 PSI, A BOOSTER PUMP IS REQUIRED. IF THESE PRESSURES CHANGES PLEASE CONTACT THE "EOR".
6. PROVIDE INSULATION FOR ALL ICE MACHINE DRAIN TRAPS.
7. ENGINEER HAS ASSUMED 2PSI GAS PRESSURE FROM GAS SUPPLY MAIN ENTRY.
8. ALL SHOWER AND SHOWER/TUBS SHALL HAVE PRESSURE BALANCING VALVE.

KEY NOTES :

1. PROVIDE AND INSTALL PRECISION PLUMBING PRODUCTS INC. #P1-500 TRAP PRIMER WITH 1/2" CW CONNECTION TO LINE INDICATED ON DRAWING. EXTEND OFF TOP OF LINE PER MANUFACTURER INSTRUCTIONS. (OR) PROVIDE AND INSTALL THE PRO SET TRAP GUARD FLOOR DRAIN AS ALTERNATIVE.

01 DUMPSTER AREA WATER SUPPLY PLAN
SCALE: 1/8"=1'-0"



NOTE: PLEASE REFER TO SITE PLAN FOR THE DUMPSTER LOCATION